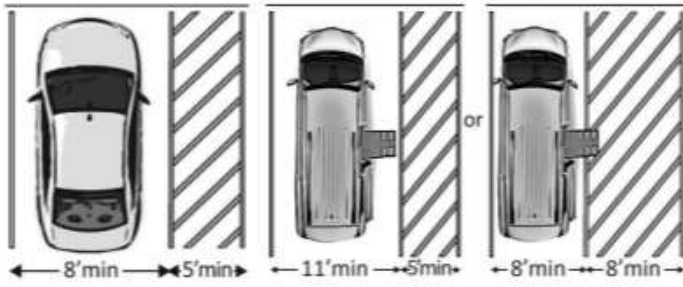
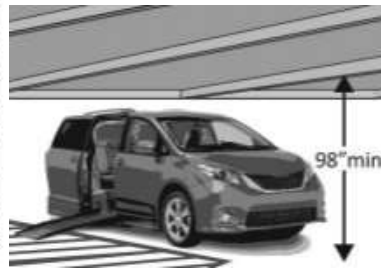


ADA SURVEY INSPECTION CHEAT SHEET MOST COMMON SHIT BY "BEN SCHERN"

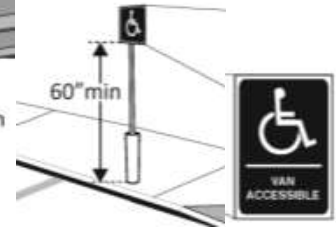


Regular

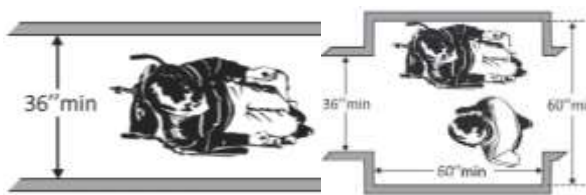
Van



Overhead

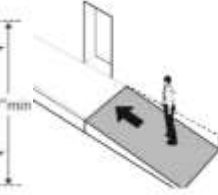


Signage, Van Accessible

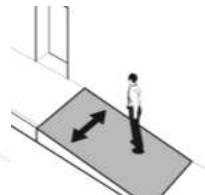


Route

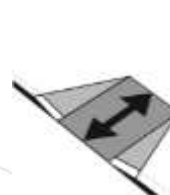
If more than 200'



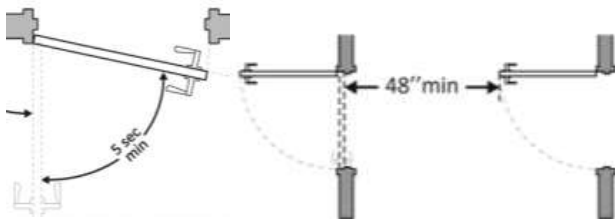
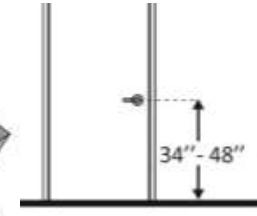
Slope 1:12



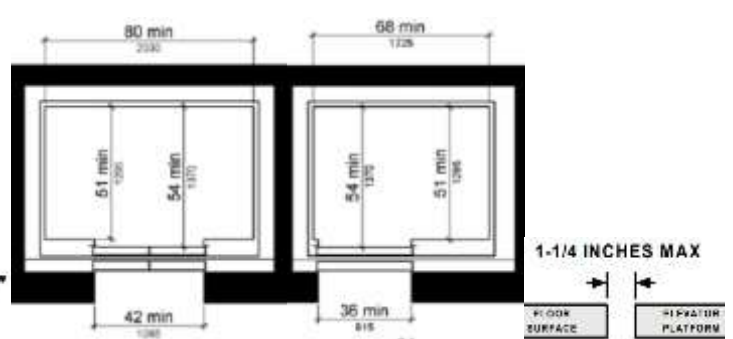
1:48 Cross Max



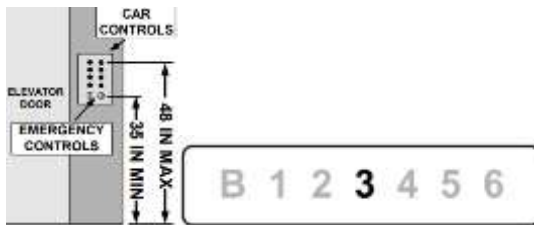
1:12 & 1:10 Flares



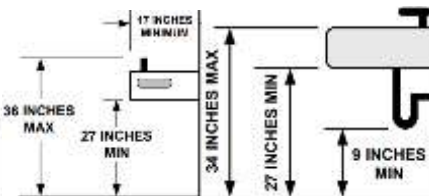
Tactile Star 1st Floor 1 ding up 2 dings down



Centered Elevator Offset



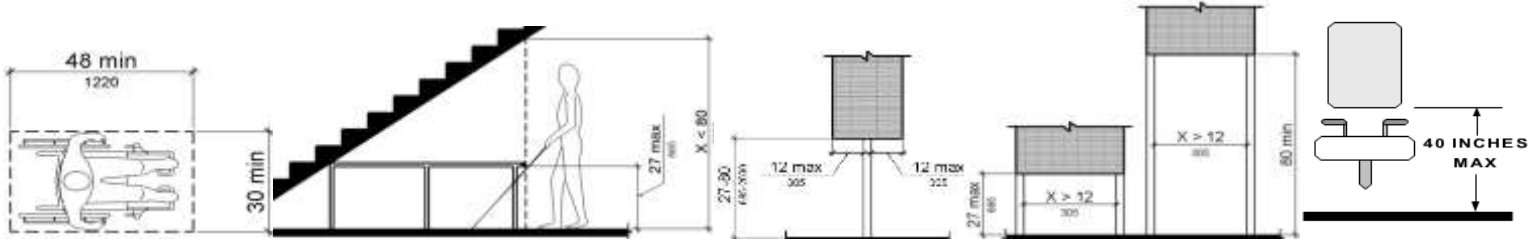
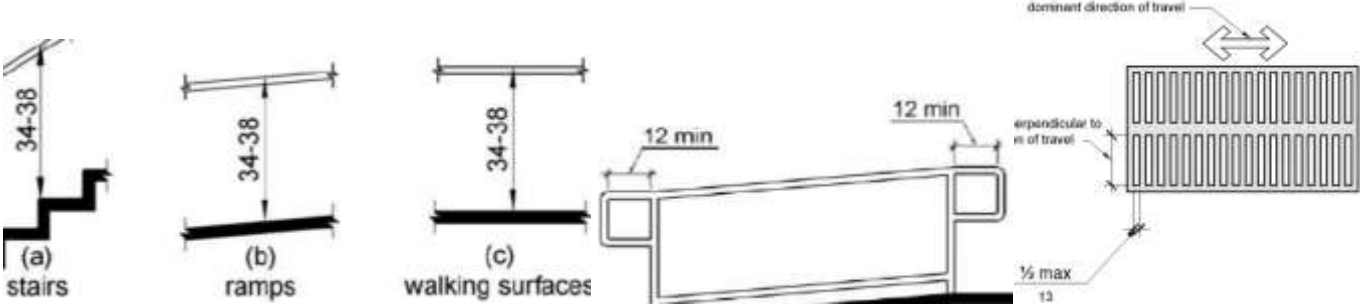
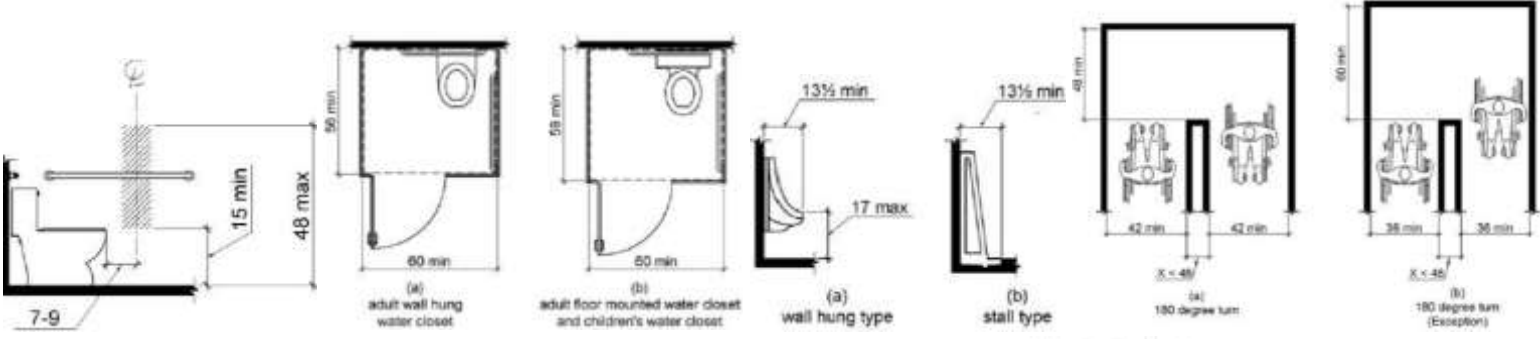
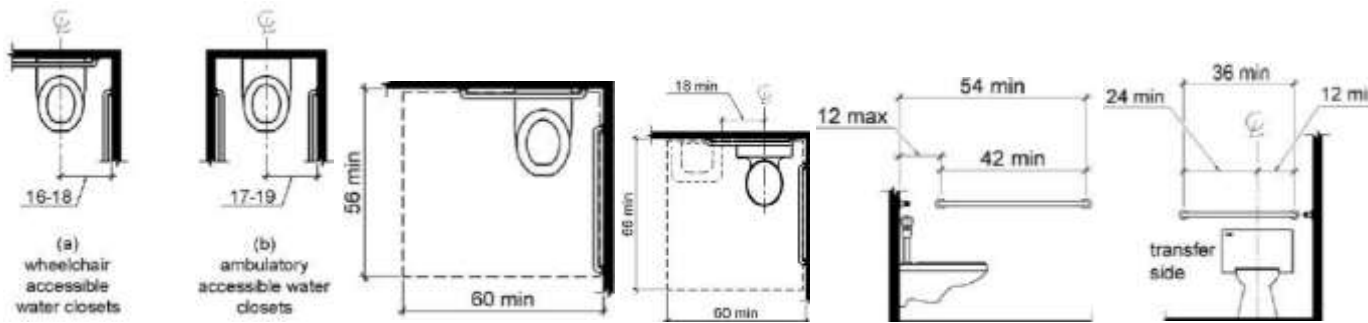
Audible/Visual Indicator?



HANDRAILS:

- > Grip = 1 1/4" - 1 1/2" or equivalent shape
- > Risers = open risers are not permitted
- > Height = 34" - 38"
- > Extension at top = 12" past top nosing
- > Extension at bottom = 12" + tread width
- > Mounting = 1 1/2" space from wall





Clear Floor Space 30/48

Underside Stairs

Post Mounted Objects

1/2" Sphere O

